

Building for Greater Impact



God desires that His church passionately serves Him by making disciples of all people [Matthew 28:18-20; Acts 1:8]. Our property development plan will significantly extend our ministry centre so that more lives are touched by and transformed by the gospel.

Through our vision to grow, impact our wider community and see lives transformed it is now time for our church to take this exciting step of faith.

This step of faith will enable us to minister more effectively to our existing church and community ministries as well as provide the resources needed to launch us into a fruitful long term future.

Our past – our future

60 years ago on December 2nd, 1952 a small faithful group of people established the Narwee Baptist Fellowship and purchased the land on which the church property now stands. The fellowship was constituted as a church in 1954 and the first church building – a small timber and fibro hall was officially opened in 1956.

In 1969 the members of the church gave generously so that a new church building, with a seating capacity of 250, was built. Ten years later this building was extended to seat an additional 150 people.

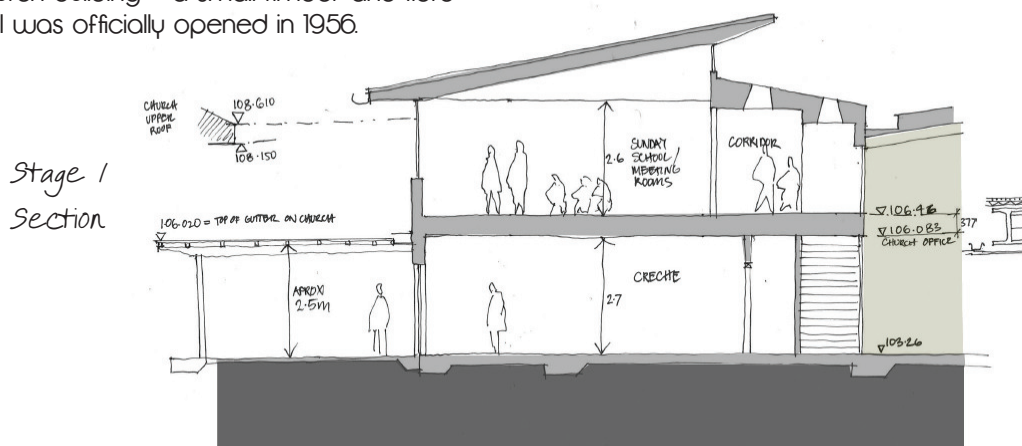
In 1990 a new Christian Education Centre was built, incorporating facilities for the community radio station, 90.1 NBCFM.

On 29 May 1992 the church building was destroyed by fire. The new church building with a seating capacity of 400 was opened on 29 May, 1994.

All through Narwee's history people have given generously and sacrificially to build facilities to help fulfil God's mission. No project comes without cost and sacrifice. It will take everyone's contribution and effort as we raise the finances to see this vision become a reality.

Building these new spaces within our ministry centre will help us reach more people more effectively and see them become passionate followers of Jesus.

Please join us in this strategic step of faith.

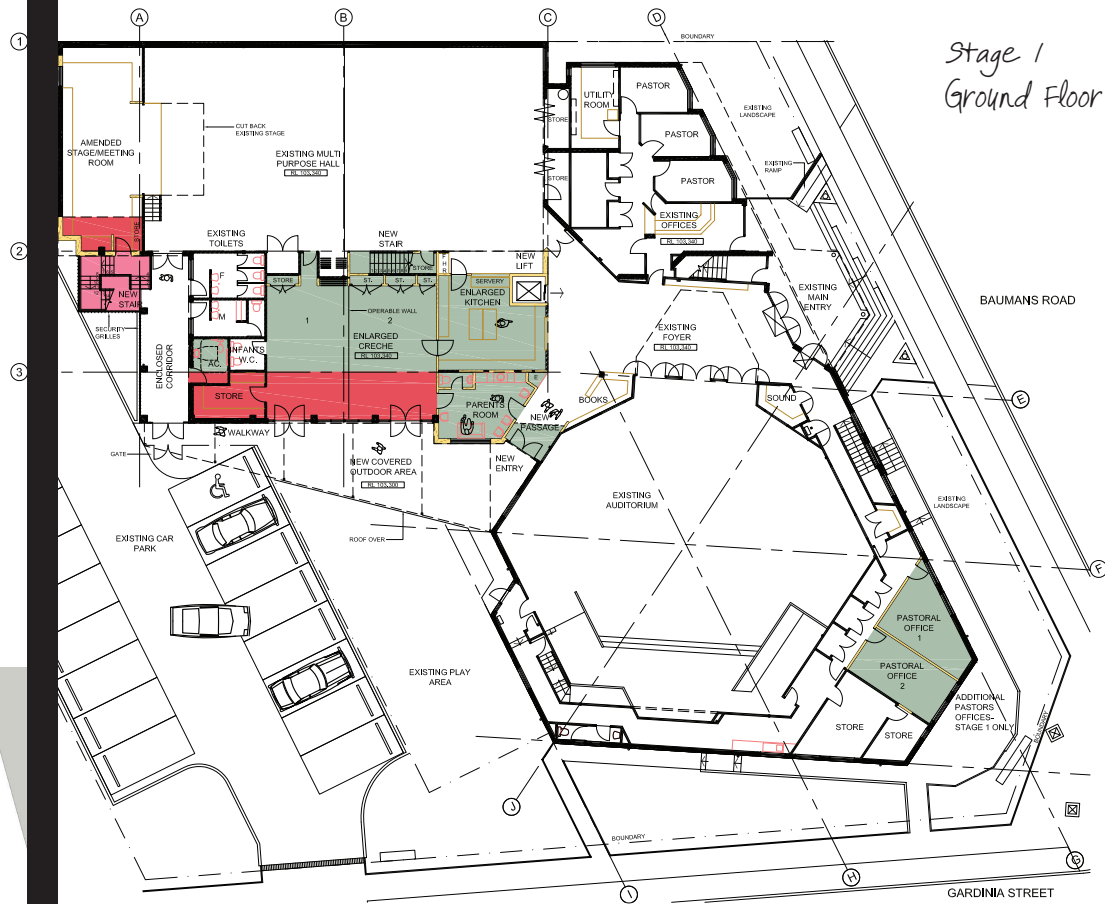


LEGEND

NEW ENCLOSED WORK
NEW WORK UNDERCOVER
INTERNAL ALTERATIONS



Stage 1 Ground Floor Plan



Overall Aerial View

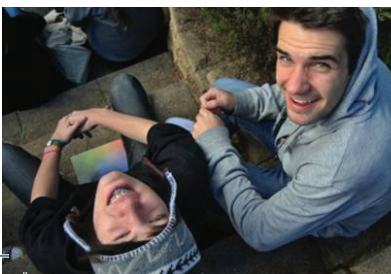


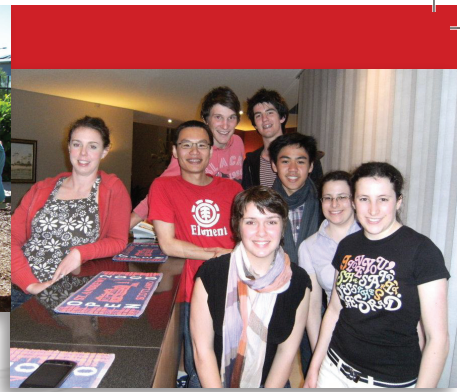
Key Features

Over the last few years we have identified some key areas where we need additional space to maximise our ministry impact. These plans seek to address these needs. The full property development plan includes two stages. The first stage is the one that we believe we need to focus on at this point in our history. Some of the key features are as follows:

- An enlarged playtime/crèche room on ground level that will open up to an outside covered area. This room will be used by a variety of groups in the church
- An enlarged kitchen
- A new, larger 'parents' room next to the crèche room
- Renovated toilets, enclosed inside the building
- A second level on top of the new enlarged playtime/crèche room
- The second level will include four meeting rooms. We will be able use these rooms for children's and youth ministry programs, Bible study groups, training and equipping courses etc
- The second level will include a small kitchen, toilets and storage
- Two offices will be built for pastoral team in the 'choir room', due to the cramped facilities in our existing office space
- A lift and two staircases

Questions about the building can be addressed to Phil Bowen, head of our Property Development Committee.





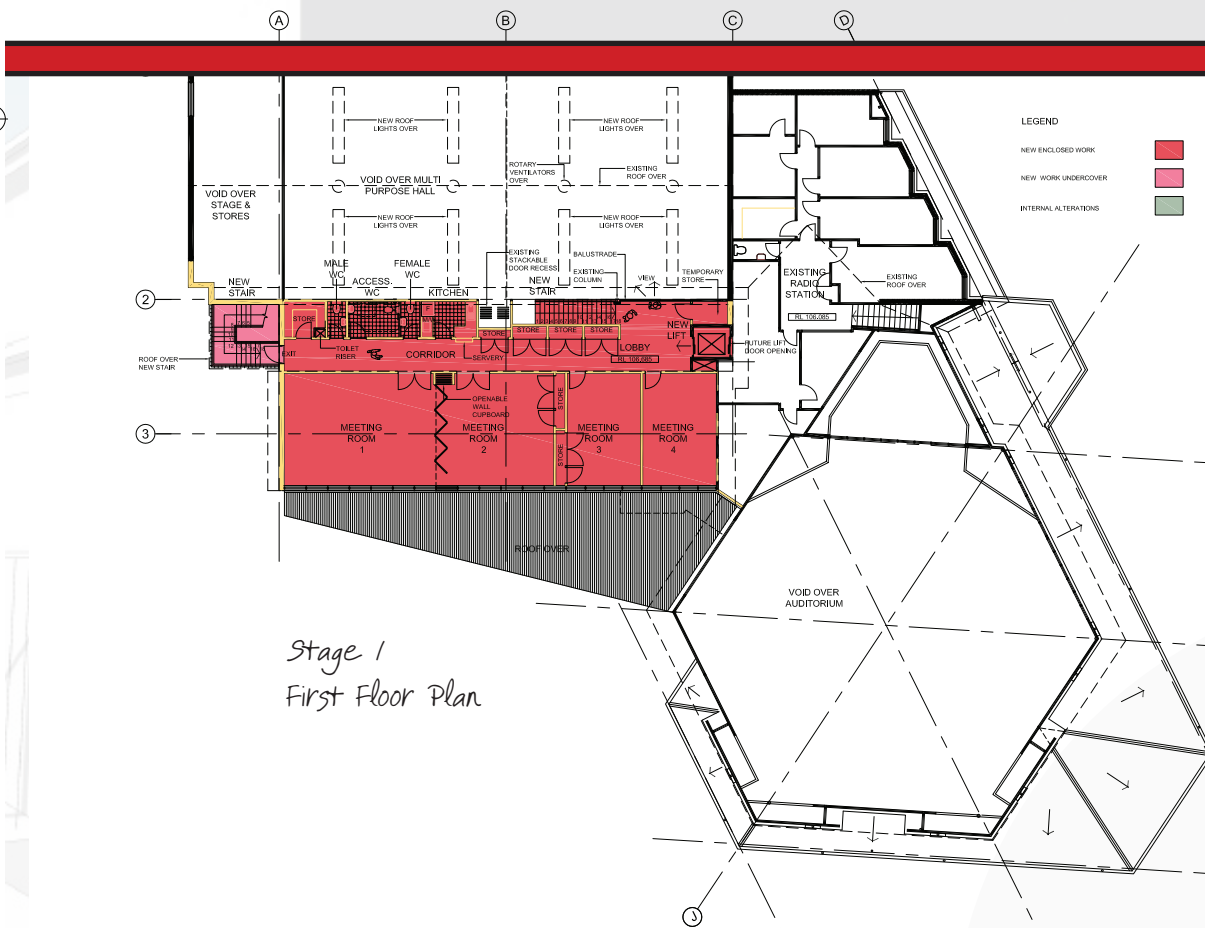
The Process

We are now about to embark on fundraising to enable us to undertake stage 1 of the property development. A number of things have happened in the last twelve months to bring us to this point.

- At the November 2011 AGM the church members authorised our Property Development Team led by architect, Phil Bowen, to prepare a Development Application [DA] on the plans presented at that meeting. We allocated the funds necessary for the DA in our 2012 budget
- At the May, 2012 Quarterly Church Meeting the church members authorized the submission of the DA to Hurstville Council
- Hurstville Council is at present considering our application

Now in the month of September we are asking each person to prayerfully consider, 'Lord, how are you asking me to help to see this build eventuate?' What do you want to do through me to accomplish your work here at Narwee and our wider community?'

Throughout the month of September at all our services we will provide input on the development plans and how you can contribute. We will seek pledges and commitments from people to help us determine the amount of borrowing we may need and when we can proceed



Stage 1
from rear of carpark



Stage 1
from carpark

Your Role

No project of worth comes without cost and sacrifice. It will take everyone's generous and sacrificial contribution and effort to raise around \$1.45 million.

Equal Sacrifice...Not Equal gifts

Sacrifice means willingly giving the best I have for a greater purpose. We cannot all give the same amount but we can all give sacrificially. Giving to the building fund needs to be in addition to our regular giving so our ministries do not suffer.

Suggested steps for determining God's will for your giving:

- Pray daily, "Lord I/we want to contribute and give sacrificially. Please show me/us how to commit to a gift that will stretch my faith"
- Give yourself to prayerfully consider creative and responsible ways to decrease expenses and/or increase income
- Be wise by considering your financial situation and by not over-committing
- Consider the following Bible passages:

"Remember this: Whoever sows sparingly will also reap sparingly, and whoever sows generously will also reap generously. Each man should give what he has decided in his heart to give, not reluctantly or under compulsion, for God loves a cheerful giver." [2 Corinthians 9:6-7]

"But just as you excel in everything - in faith, in speech, in knowledge, in complete earnestness and in your love for us - see that you also excel in this grace of giving." [2 Corinthians 8:7]

"Do not store up for yourselves treasures on earth, where moth and rust destroy, and where thieves break in and steal. But store up for yourselves treasures in heaven, where moth and rust do not destroy, and where thieves do not break in and steal. For where your treasure is, there your heart will be also." [Matthew 6:19-21]

How do we fund this development?

The total cost of Stage 1 is \$1.45 million. With costs already paid and money at hand we would need to raise \$1.22 million. The more money we raise, the less we will need to borrow. See table 1.

Table 1	\$'000
Total stage 1 cost	1,450
less DA costs already paid	30
less funds at hand	200
To be financed by donations, grants & loans	1,220

During our pledge month of September we are asking people to consider three ways of giving:

- A lump sum gift
- A regular weekly or monthly gift for a period of two years, separate to your weekly offering
- Offer an interest free or low interest loan to the church through Baptist Financial Services.

Please note that we do not need the money in September. What we need to know is your pledge or commitment towards the property development to help us plan ahead.

Table 2 shows that even a small contribution can make a difference. Whether you can make a large donation, or small donation each week over two years, it all helps to reach our target.

Remember it's about Equal Sacrifice...Not Equal Gifts. Please take time to pray and consider what you can contribute so that we can make a greater impact for the glory of God.

Your pledge can be made on the separate pledge form and submitted to the Treasurer, Andrew McDonald, in the special building development envelope during the month of September.

To God be the glory.



Table 2

Households/ families	Lump sum gift per household (\$)	Equivalent weekly amount over 2yrs (\$)	Total raised (\$)
3	25,000	240	75,000
32	10,000	96	320,000
90	5,000	48	450,000
90	2,500	24	225,000
90	1,000	10	90,000
95	500	5	47,500
400			1,207,500